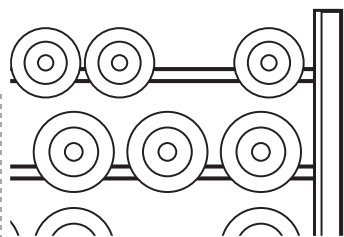
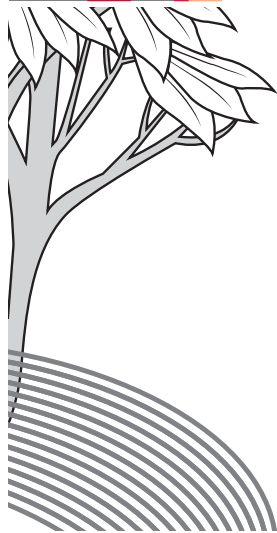


BEGIN YOUR
EXTRAORDINARY STORY





WHERE PROMINENT LOCATION BRINGS THE WORLD AT YOUR DOORSTEP

Begin your extraordinary story at Thane's ever growing destination. Renowned brands, superfast connectivity and everything else you need for daily life, here nothing falls short.

Thane combines the perks of the city's phenomenal life and tranquillity of serene nature.

It has flyovers, highways and wide roads to make your commute easier.

The city is crowned with the best-in-class residential developments, socializing avenues, malls, IT parks, schools and hospitals.



WHERE YOU SURROUND YOURSELF WITH THE CITY'S EVERY PRIVILEGE

- 
HEALTHCARE
 - ◆ Jupiter Hospital - 200 Mtrs
 - ◆ E.S.I.C. Hospital - 2.20 Kms
 - ◆ Hiranandani Hospital - 5.60 Kms

- 
RETAIL & RECREATION
 - ◆ Viviana Mall - 190 Mtrs
 - ◆ Korum Mall - 700 Mtrs
 - ◆ RMall Thane - 3.4 Kms

- 
EDUCATION
 - ◆ Singhania School - 800 Mtrs
 - ◆ C.P Goenka International School - 2.7 Kms
 - ◆ Hiranandani Foundation School - 6.40 Kms

Borivali (45 Mins)

KAPURBAWDI

R Mall

CP GOENKA INTERNATIONAL SCHOOL

VASANT LAWNS

VASANT FIONA

SHETH ENERGY

SHETH AVALON

JUPITER HOSPITAL & FORTUNE HOTEL

VIVIANA MALL BY SHETH GROUP

SHETH ZURI

METRO STATION

SAMATA NAGAR

Singhania School

KORUM MALL

THANE MUNICIPAL CORPORATION

Thane Station (4.5 KM)

NITIN COMPANY

Ulhas River

Bhiwandi - Kalyan

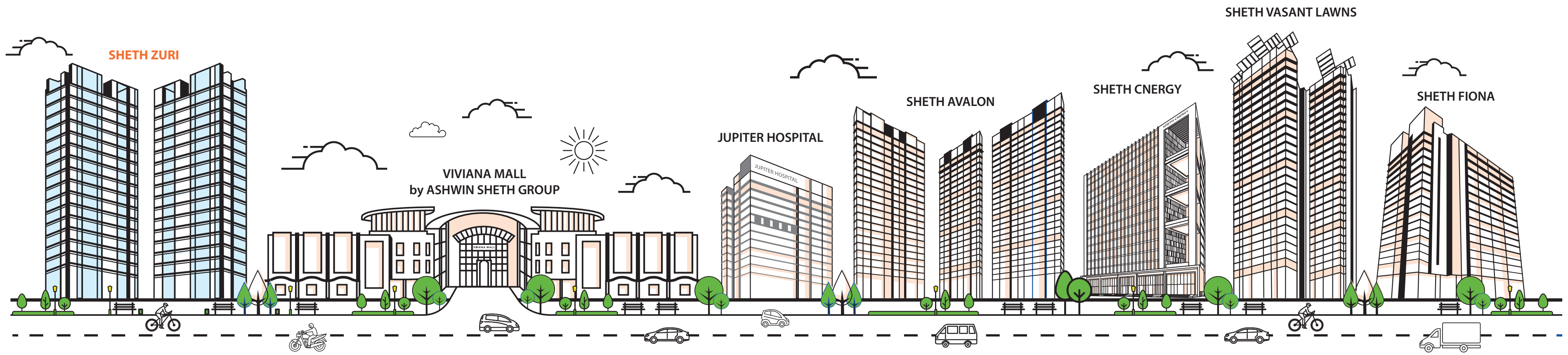


THANE'S PLATINUM BELT

RESIDENTIAL | RETAIL | COMMERCIAL

WHERE YOU EXPERIENCE THE BEST SIDE OF THANE

Thane's Platinum Belt is a gateway to Sheth Group's premium living experiences, crafted to fulfil a million aspirations at one single stretch. Here, you can treasure unforgettable moments every day, pursue your hobbies, socialize, or give head to your aspirations. Moreover, this exclusive world is encircled by the city's renowned restaurants, reputed schools, entertainment zones and everything you need to make life truly extraordinary.



sheth ZURI

2 & 3 BEDROOM RESIDENCES
NEXT TO VIVIANA MALL

YOUR EXTRAORDINARY STORY

At Sheth Zuri, you will experience life in its finest form. Thoughtfully designed lifestyle features, superfast connectivity of the Eastern Express Highway and the presence of Viviana Mall in the neighbourhood, here everything is positioned to elevate your lifestyle.

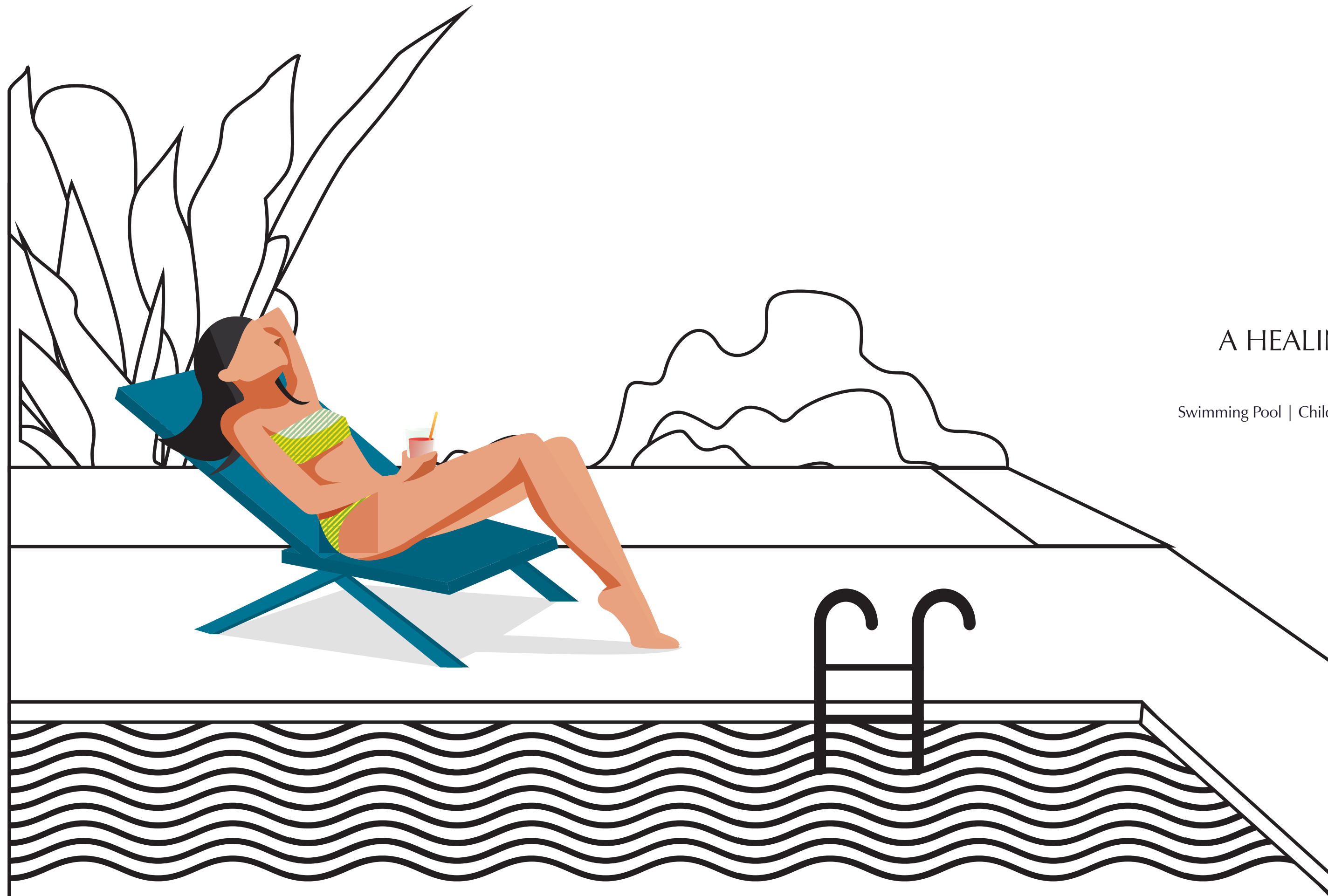
- 1 3 aesthetically planned towers of 33 storeys
- 2 Privacy focussed 2 and 3 BHK residences
- 3 Zero negative space planning
- 4 Cross ventilated apartments with natural light and breeze from all corners
- 5 Over 18 indoor & outdoor lifestyle amenities





WHERE YOU CREATE
UNFORGETTABLE STORIES
EVERY DAY

Over 18 indoor & outdoor
lifestyle amenities



A HEALING THERAPY AFTER A TIRING DAY

Leisure

Swimming Pool | Children's Pool | Pool Deck | Steam Room | Lounge Area | Reading Lounge

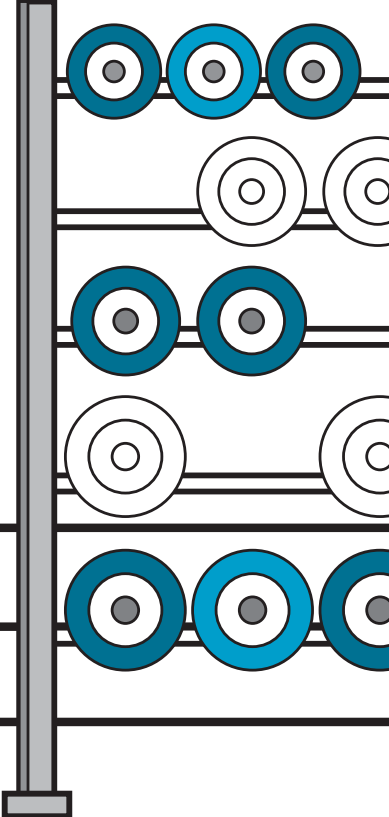




A REJUVENATING WORKOUT FOR A HEALTHIER YOU

Fitness

Gymnasium | Jogging Track | Interactive Wall | Outdoor Fitness Zone

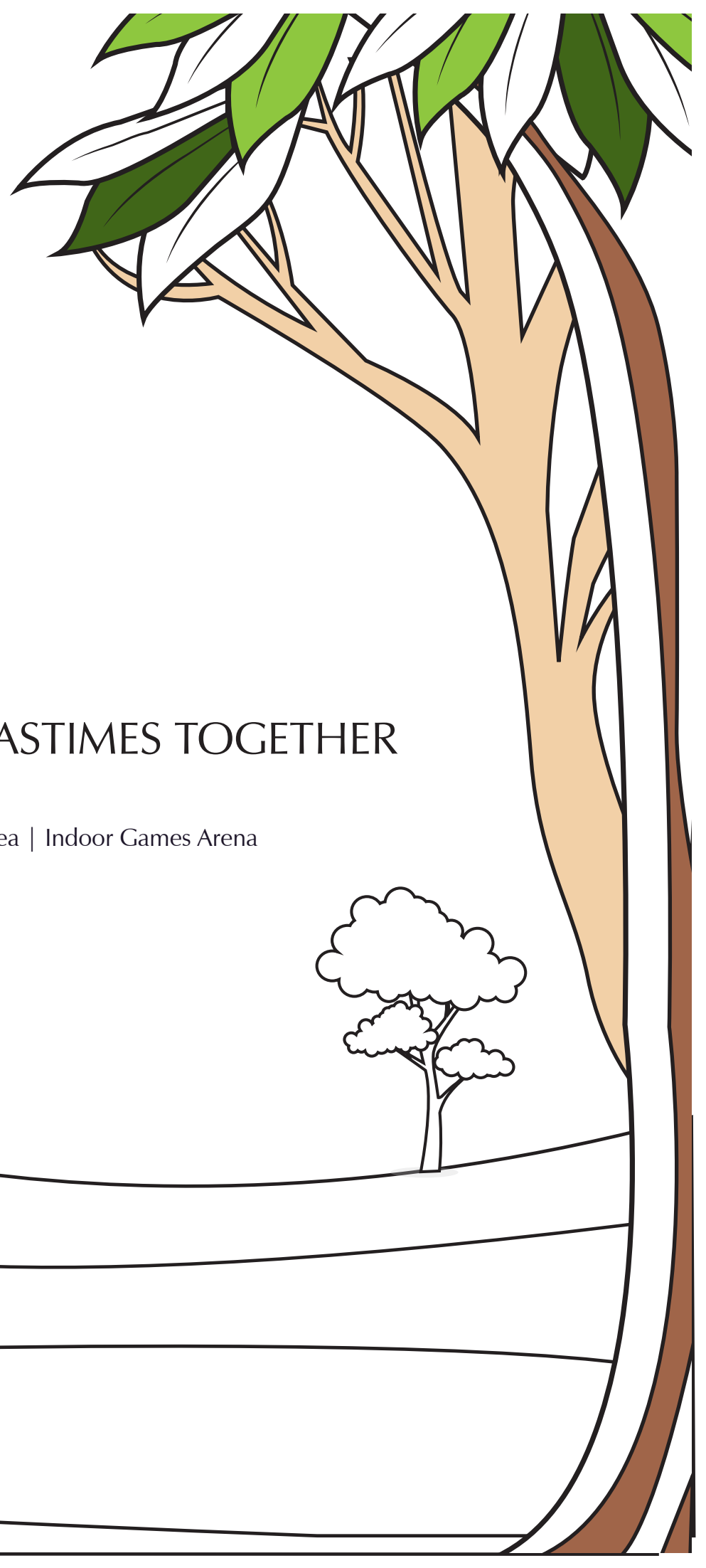




RELISH YOUR FAVOURITE PASTIMES TOGETHER

Recreation

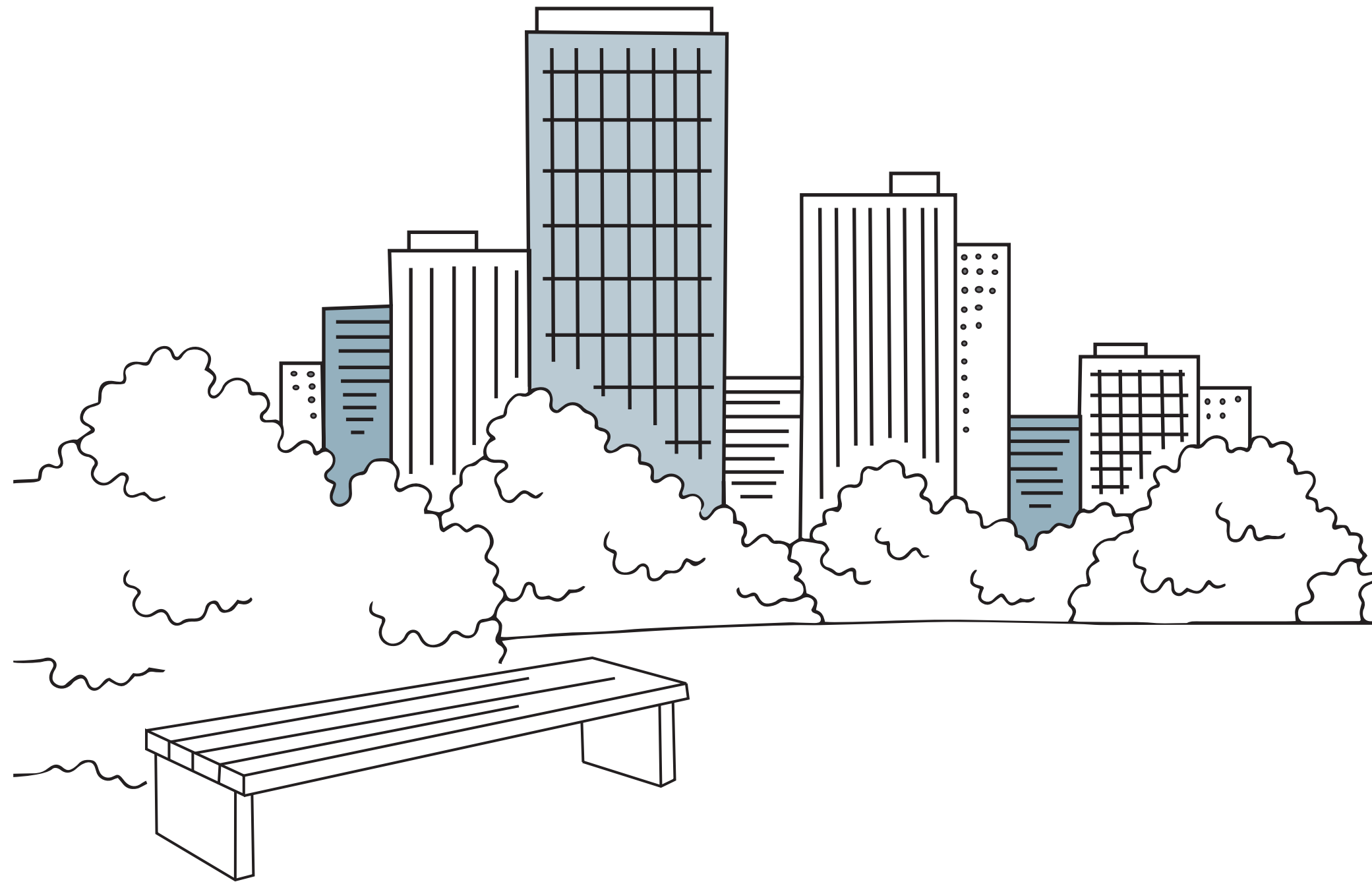
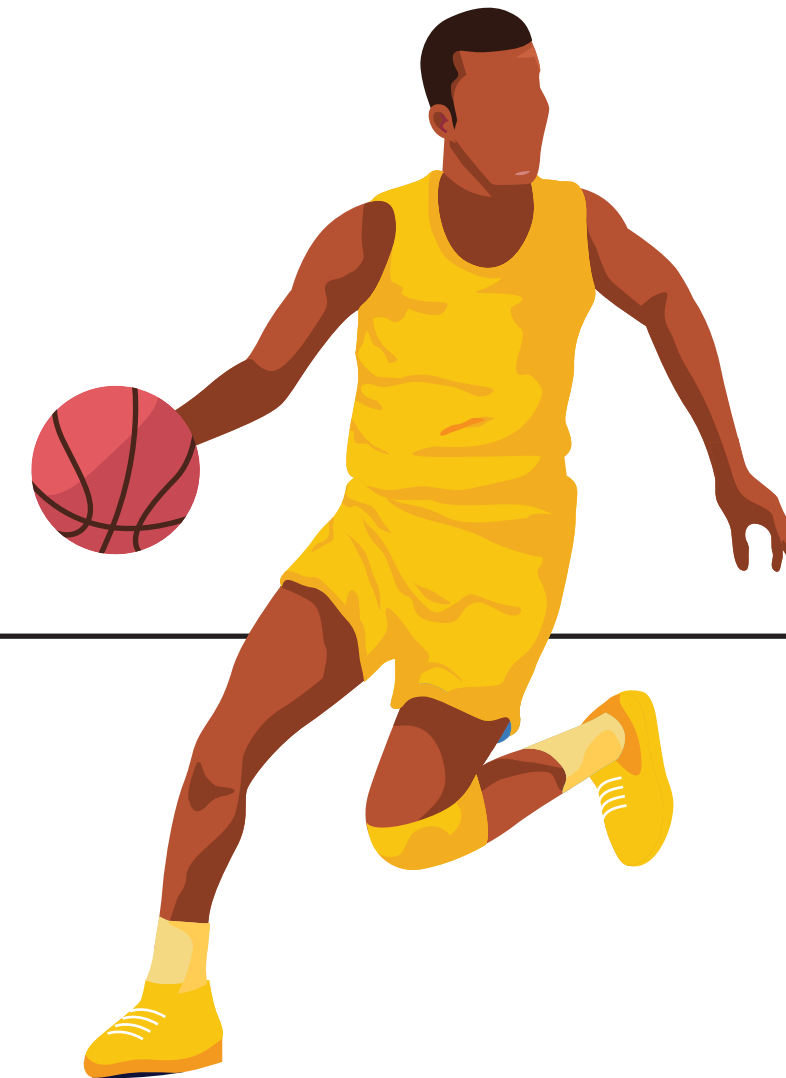
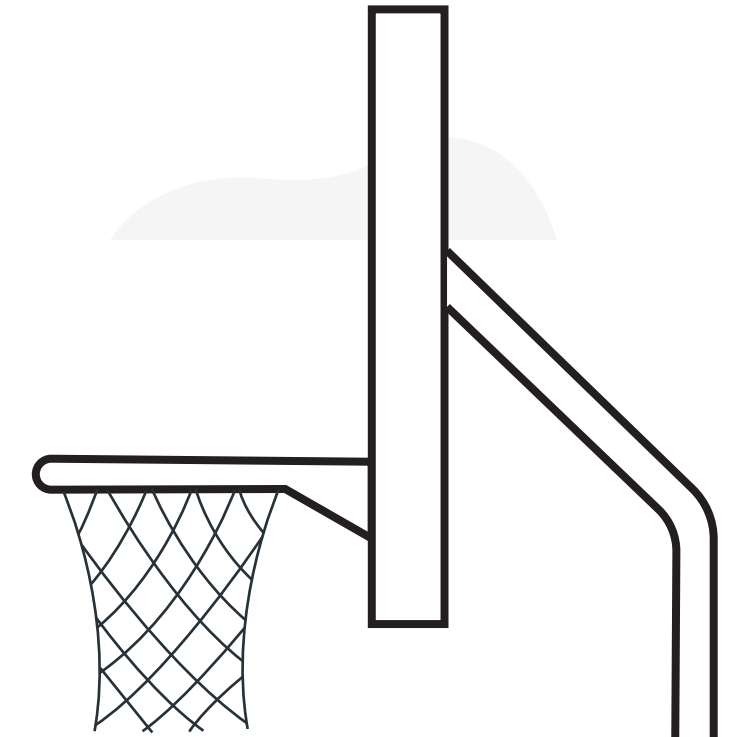
Senior Citizen's Zone | Children's Play Area | Indoor Games Arena

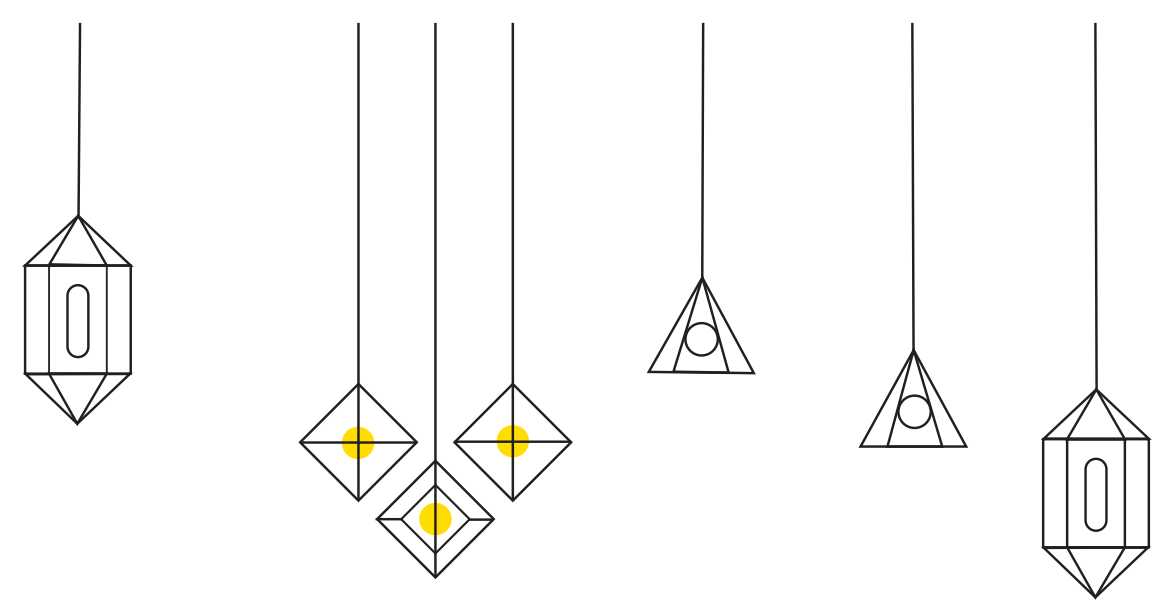


A GRAND PLATFORM TO
PURSUE YOUR HOBBIES

Sports

Cricket Pitch | Basketball Court

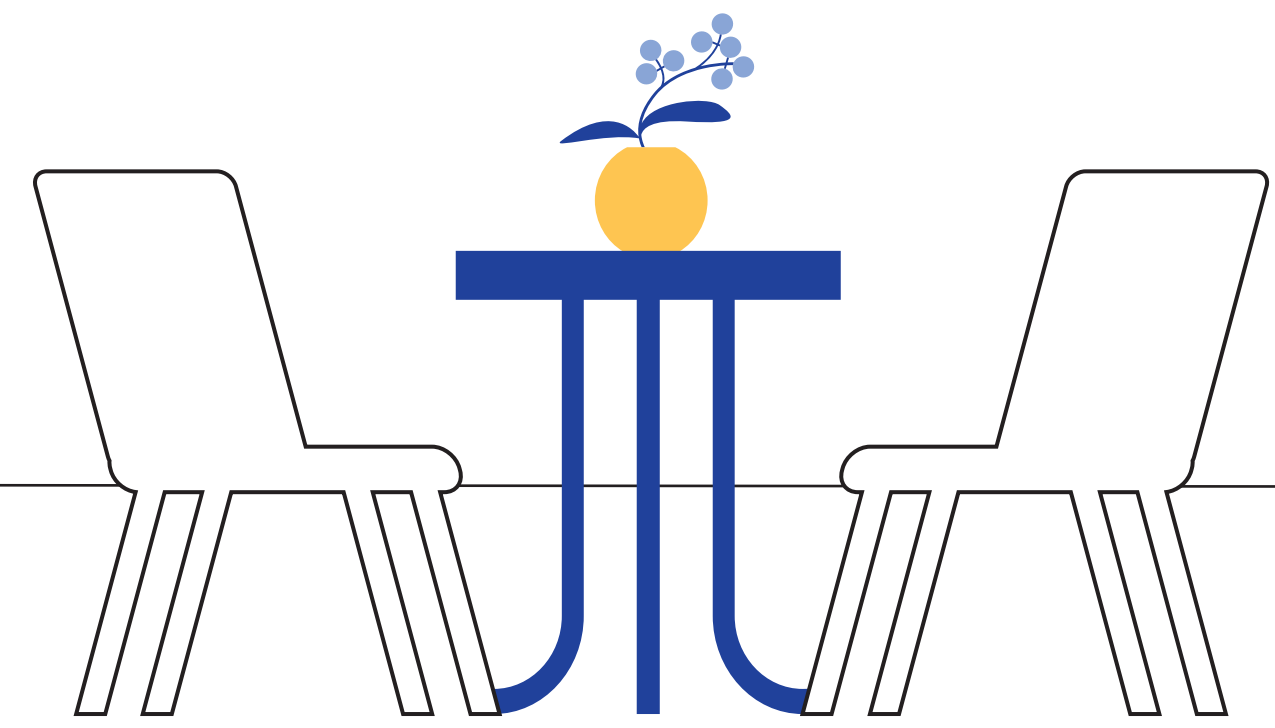


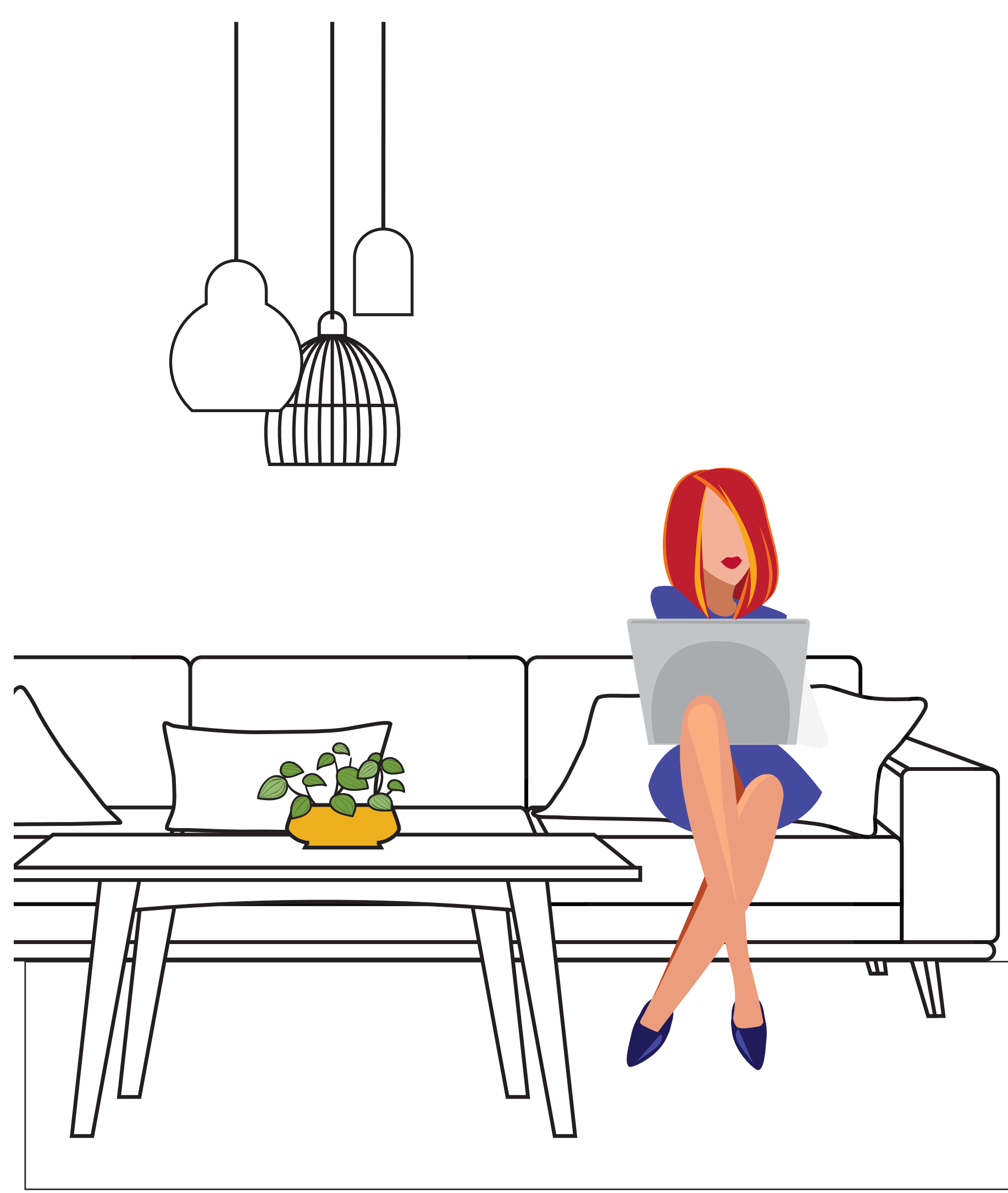


AVENUES TO MAKE EVERY CELEBRATION MEMORABLE

Entertainment

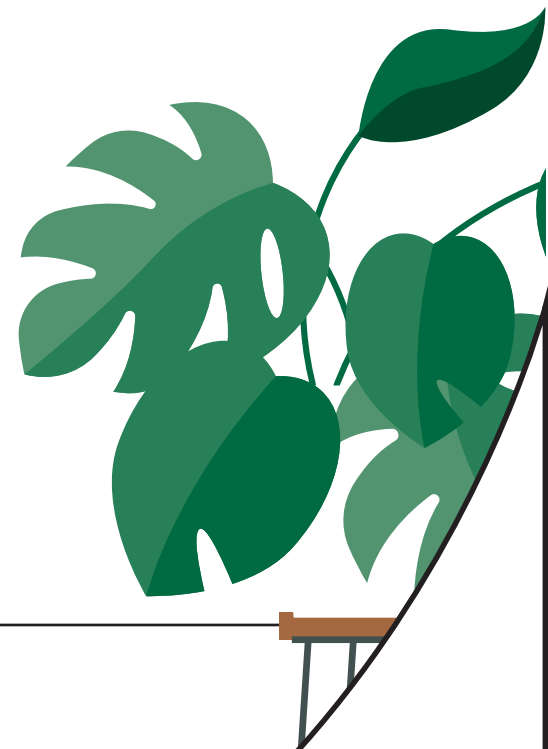
Amphi-seating | Party Lawn | Multipurpose Hall





WHERE EVERY CORNER LEAVES A LASTING IMPRESSION

Every residence makes use of zero negative space planning method that accentuates every square inch of space with distinct utility. Designed to offer various configurations in acreage, Sheth Zuri is aimed to cater to a wide array of home buyers who are looking for modern living spaces that offer a unique lifestyle, tailored to their preferences.



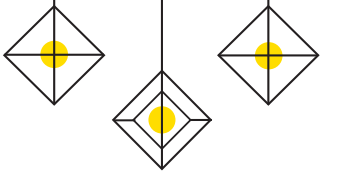


SHOT AT LOCATION



SHOT AT LOCATION

EXPERIENCE THE SHEER ELEGANCE OF RESIDING IN SHETH ZURI



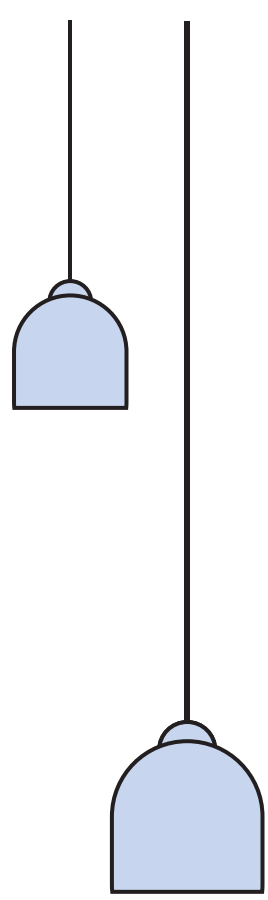
SHOT AT LOCATION

YEOR HILLS VIEW - SHOT AT LOCATION



GET MESMERIZED
BY UNINTERRUPTED
CITYSCAPE VIEWS





INTERNAL SPECIFICATION

Living & dining

- Vitrified flooring
- Extensive electrical layout
- Windows with granite sill
- Cable point
- Landline phone point
- AC points as per well-laid routing provision
- Intercom facility

Kitchen

- Vitrified flooring
- Granite platform with stainless steel sink
- Gas leak detector and provision for piped gas connection
- Extensive electrical layout with points for water purifier refrigerator

Study room

- Vitrified flooring
- Extensive electrical layout
- Windows with granite or marble sill
- Cable point
- Landline phone point
- AC points as per well-laid routing provision

Bedroom

- Vitrified flooring
- Extensive electrical layout
- Windows with granite sill
- Cable point
- Landline phone point
- AC points as per well-laid routing provision

Bathrooms

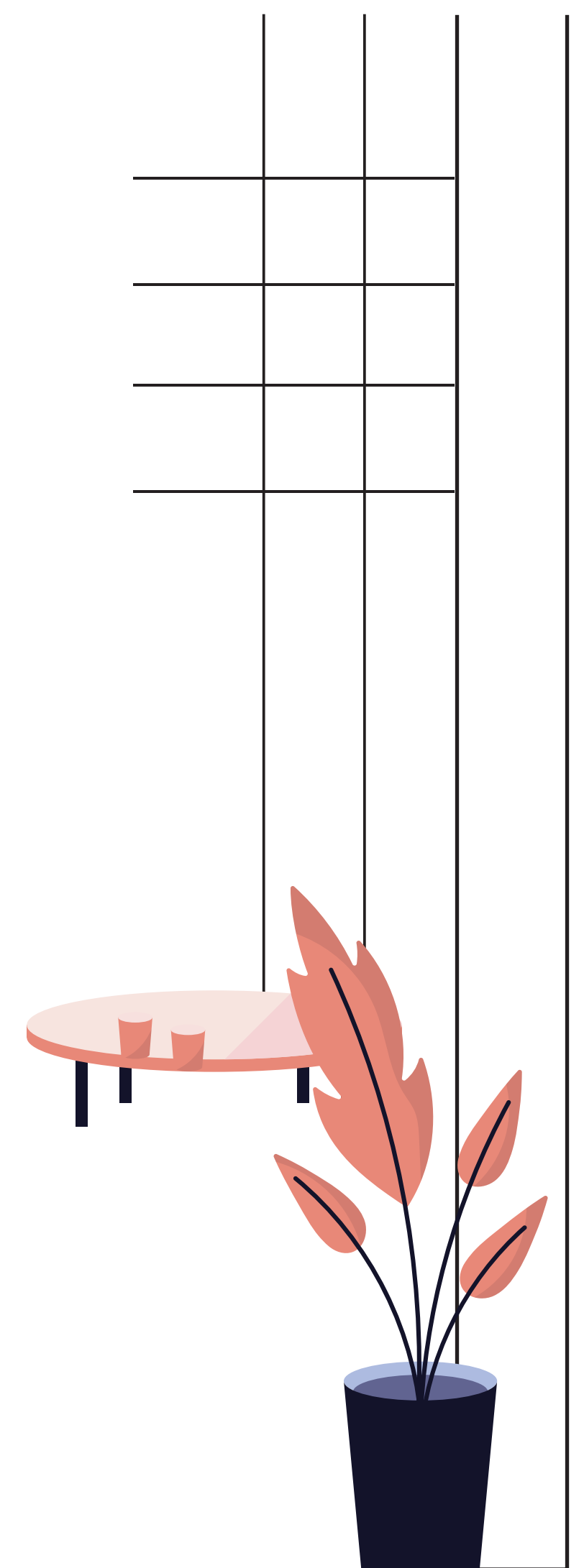
- Ceramic anti-skid flooring
- Glazed dado tiles
- High quality sanitary ware & CP fittings
- Extensive electrical layout with point for exhaust & geyser

Electricals

- Extensive layout in concealed copper wiring
- Modular switches in every flat
- Provision for lights & fans
- TV points

Windows

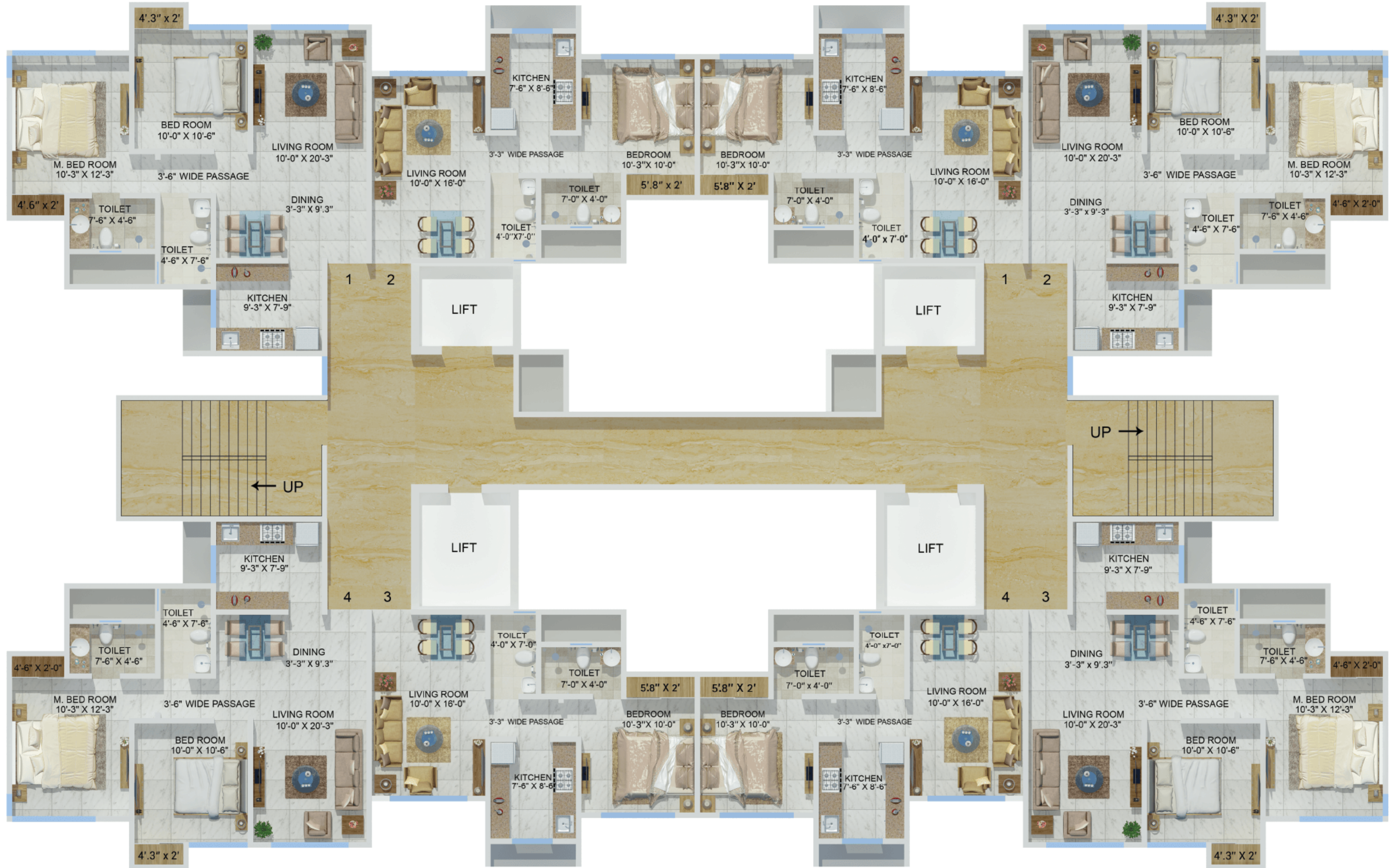
- Heavy aluminium powder-coated sections with granite sills
- Internal wall finish
- Gypsum plaster
- Lustre paint in living, dining room & passage



LEGEND

- 01) Swimming Pool
- 02) Children's Pool
- 03) Children's Play Area
- 04) Clubhouse
- A- Gym
- B- Indoor Games Arena
- C- Multipurpose Hall & Podium
- D- Steam Room
- 05) Pool Deck
- 06) Amphi-seating
- 07) Party Lawn
- 08) Lounge Area
- 09) Outdoor Fitness Zone
- 10) Senior Citizen's Zone
- 11) Jogging Track
- 12) Reading Lounge
- 13) Interactive Wall
- 14) Cricket Pitch
- 15) Basketball Court





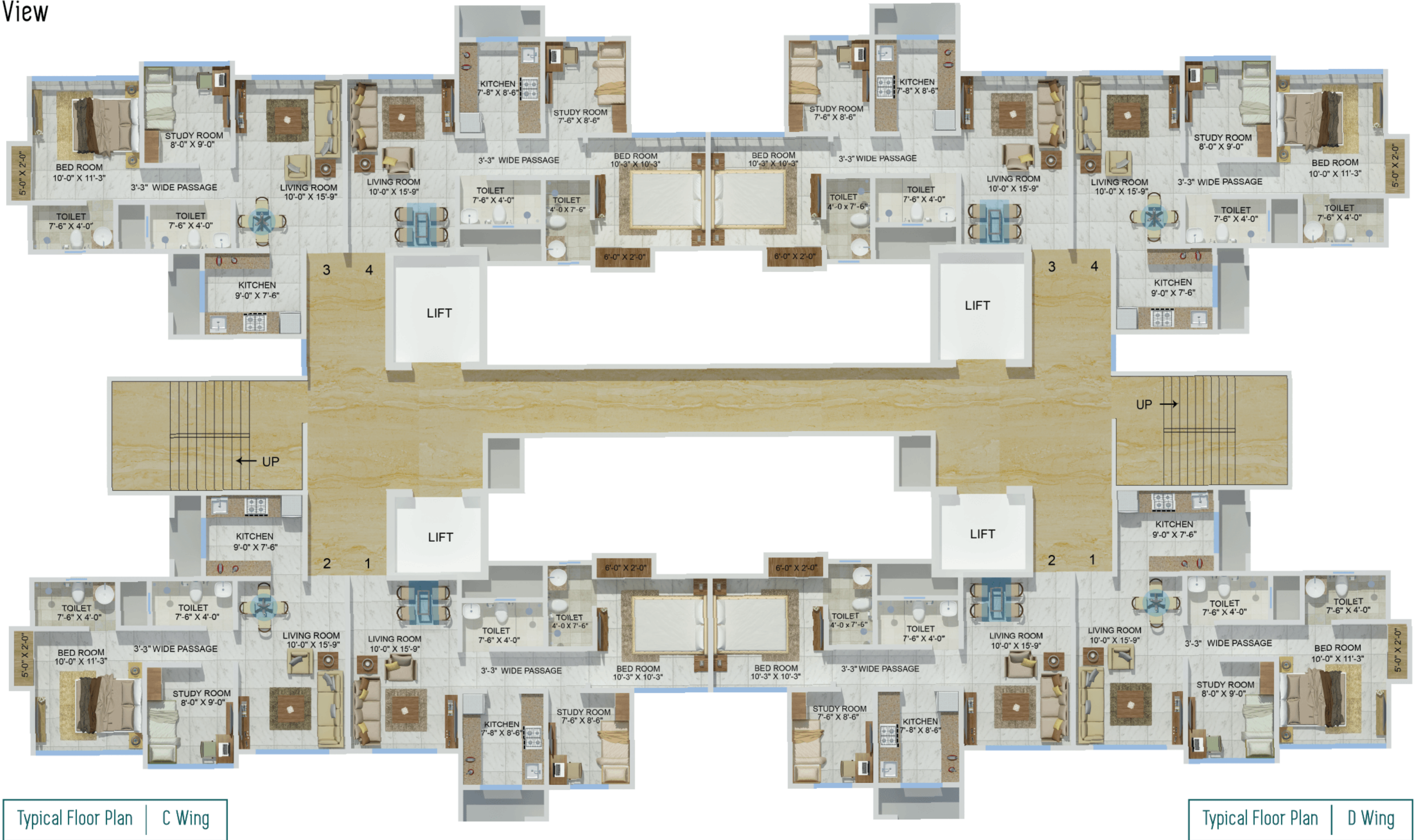
Typical Floor Plan | B Wing

City View

Typical Floor Plan | A Wing



City View

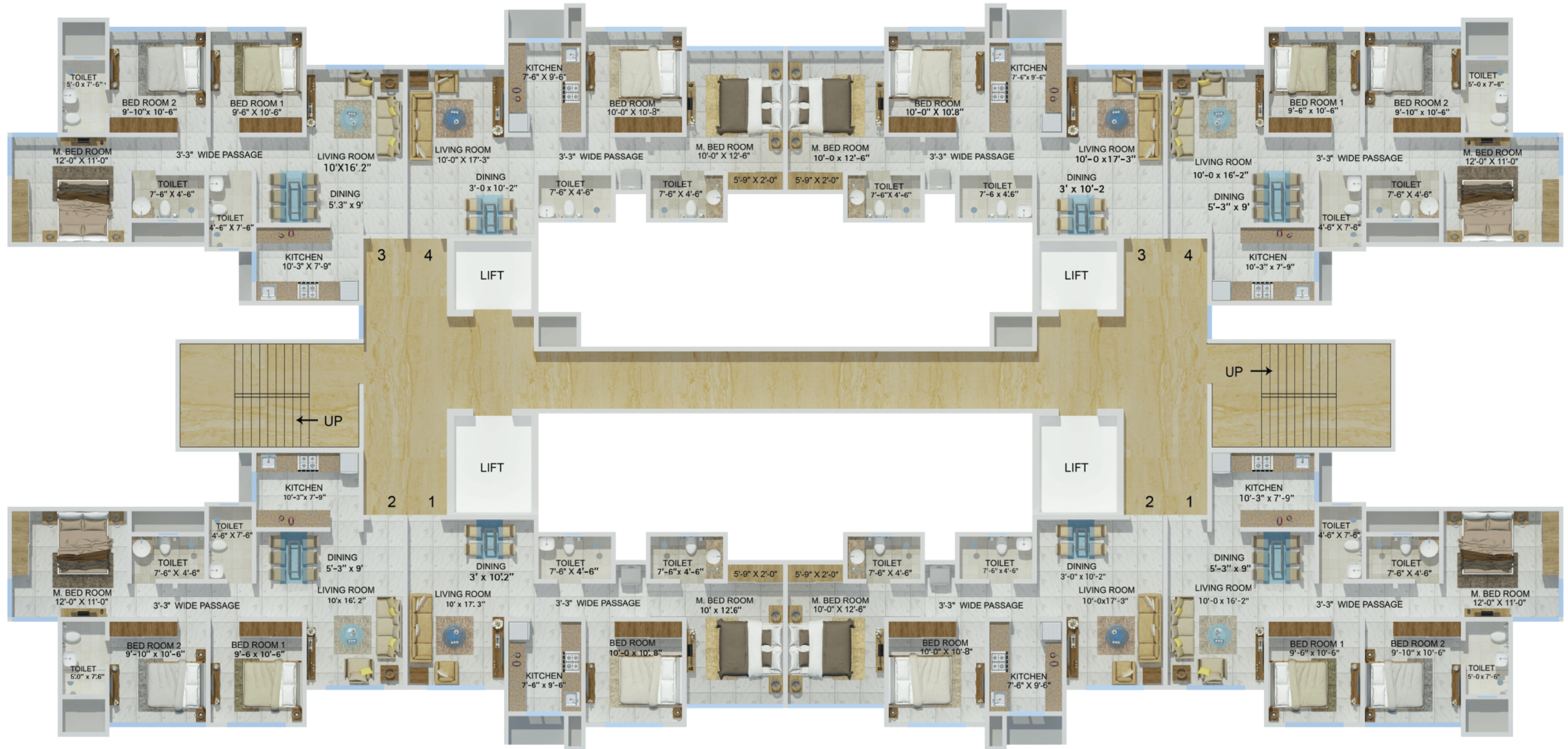


Typical Floor Plan | C Wing

Typical Floor Plan | D Wing



Yeoor Hills View



Typical Floor Plan | E Wing

Typical Floor Plan | F Wing



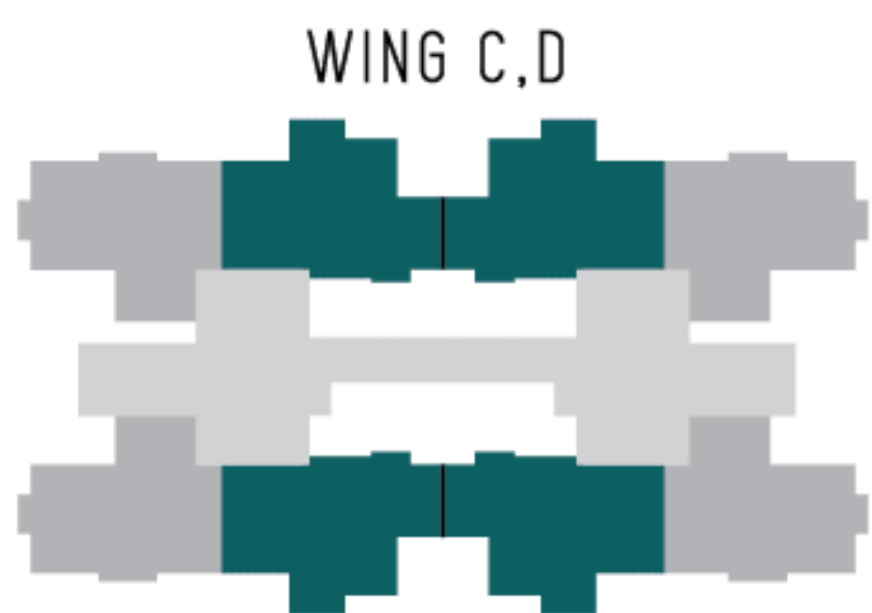
Unit Plan	2 BHK STANDARD
Carpet Area	515 Sq.ft.



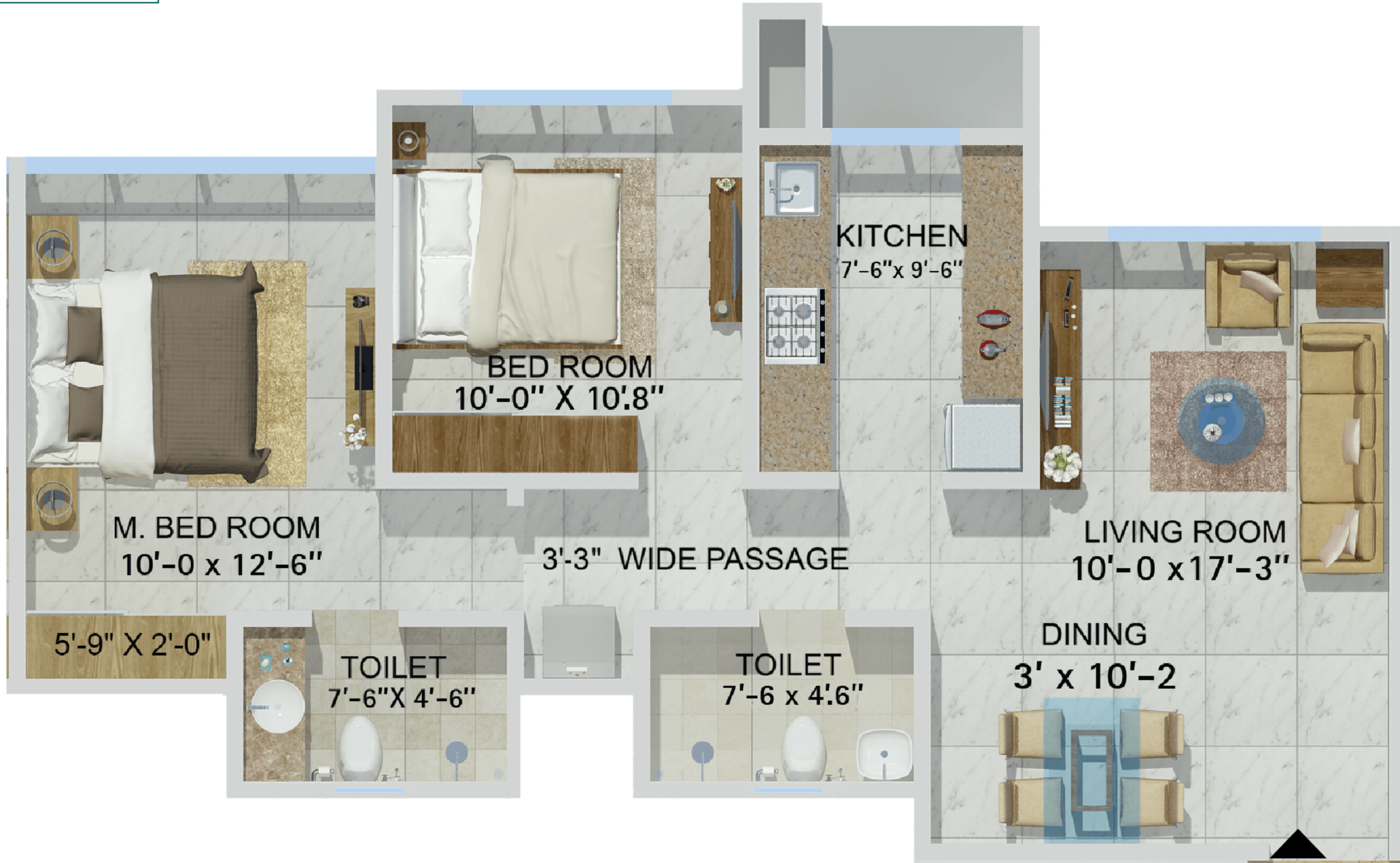
WING C,D



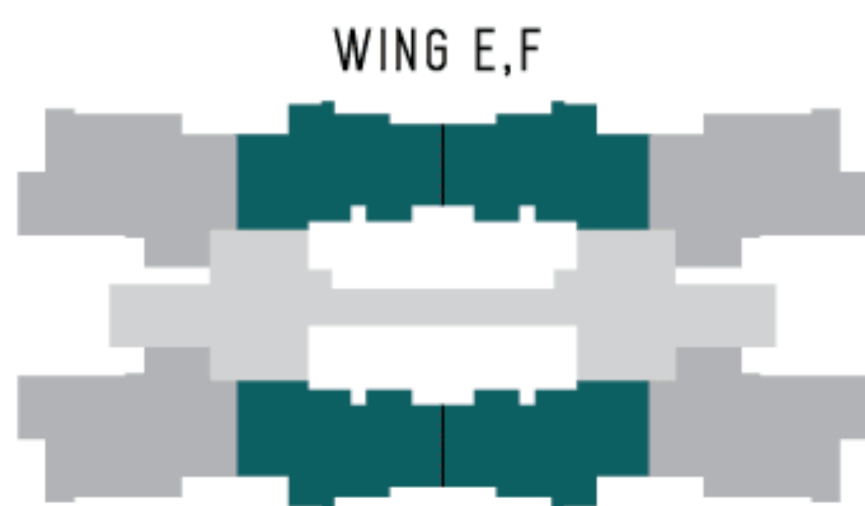
Unit Plan	2 BHK CLASSIC
Carpet Area	517 Sq.ft.



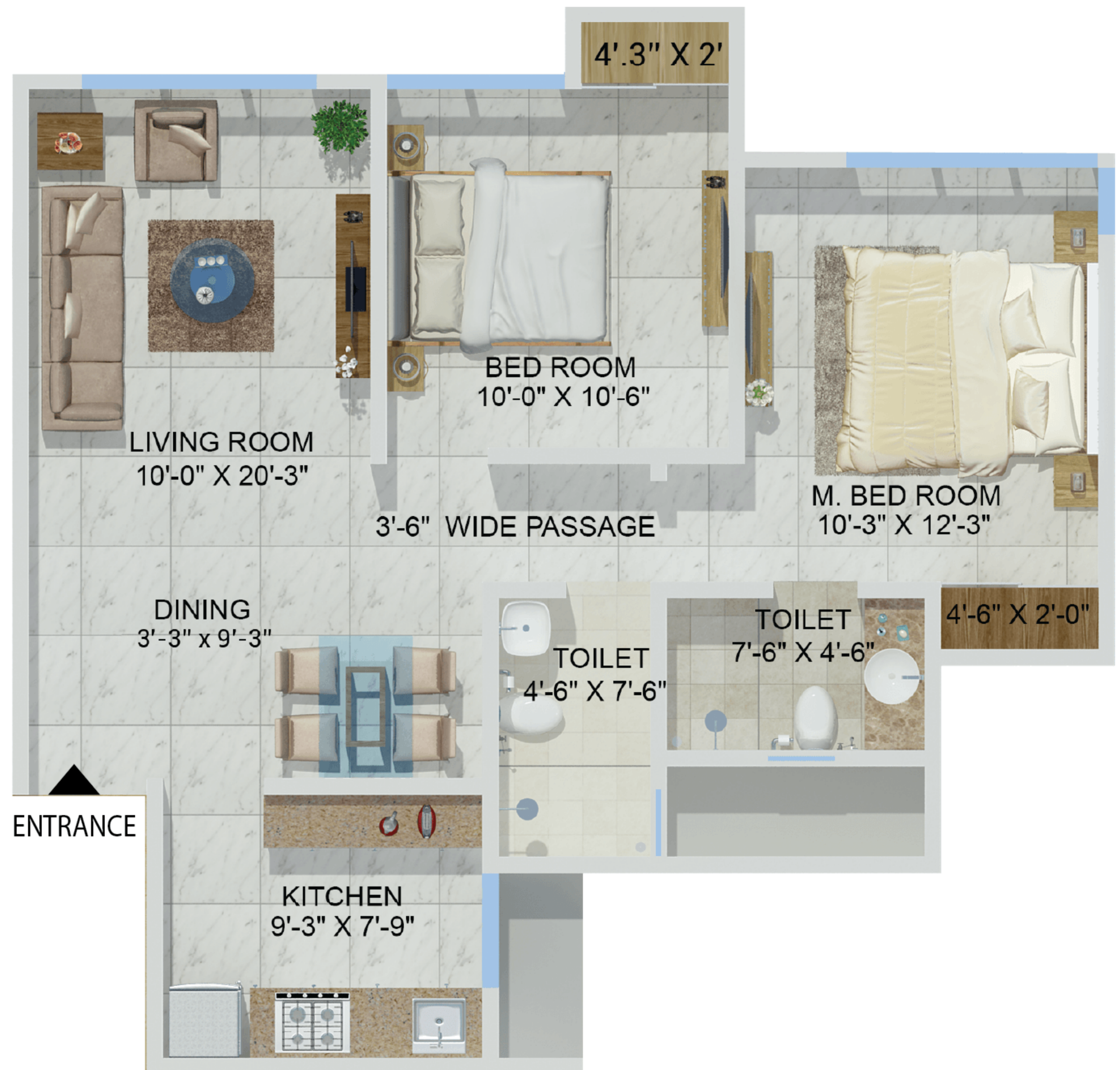
Unit Plan	2 BHK GRAND
Carpet Area	650/651 Sq.ft.



ENTRANCE



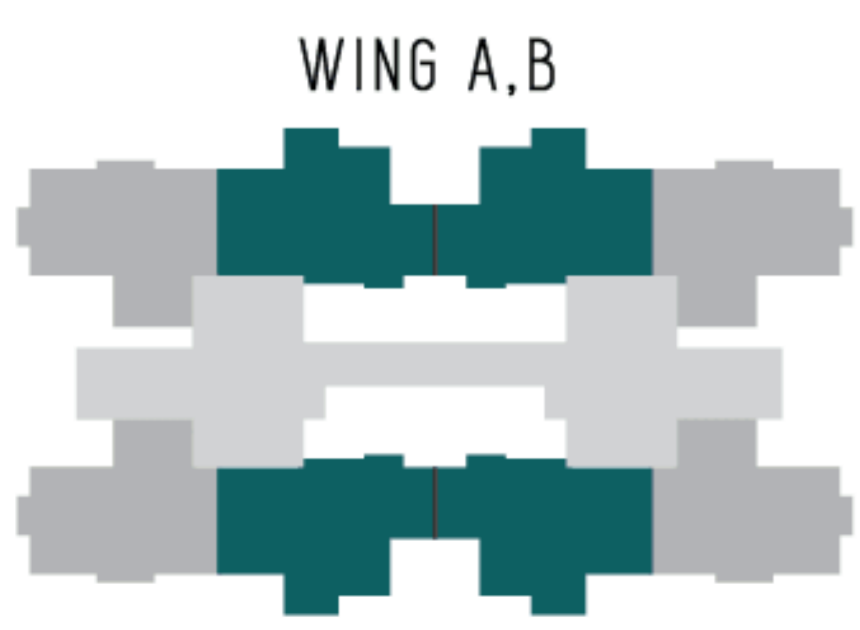
Unit Plan	2 BHK SUPREME
Carpet Area	654 Sq.ft.



Unit Plan	3 BHK
Carpet Area	787 Sq.ft.



Unit Plan	1 BHK
Carpet Area	426 Sq.ft.





Site Address: Sheth Zuri, Beside Viviana Mall, Thane's Platinum Belt, Eastern-Express Highway, Thane (W) – 400606.

Call: 90719 96803 | Email: sales@shethdevelopers.com | Website: www.ashwinshethgroup.com



The project has been registered via MahaRERA registration number: RERA P51700007274 and is available on the website <https://maharera.mahaonlin.gov.in> under registered projects.



Disclaimer: This Brochure is purely conceptual. The information contained in the brochure including the number of buildings, towers, wings, structures, elevations, photographs, sketches, visuals, pictures, images, details, specifications, dimensions, common area, amenities, facilities, the fixtures, fittings, soft furnishing/furniture, landscaping and other details therein are strictly provided for representative and illustrative purposes. List of amenities, specifications, designs and facilities provided in the Agreement for Sale shall stand final and binding. Distance and timelines are tentative and approximate subject to road and infrastructure facilities provided by the appropriate authorities. The layout plan shown is indicative and tentative, and subject to modification on account of any change in plans, permissions and final approval of the respective appropriate authorities and any further developments in surrounding areas in future.

The project has been financed by Motilal Oswal Home Finance Limited.